



**CORRINE VAN HOOK-TURNER (SHE/HER/ELLA), DIRECTOR/DIRECTORA**

**JAIME LOVE (SHE/HER/ELLA), DIRECTOR OF PROGRAMS/DIRECTORA DE PROGRAMAS**

## **Intro to Community-Driven Planning**

## **Introducción a la planificación impulsada por la comunidad**

# About R2E2

- Residential Retrofits for Energy Equity (R2E2) is a new nationwide initiative that will provide training to state, local, and tribal governments as well as community-based organizations and other partners to jumpstart energy upgrades for affordable housing that will lower utility bills, reduce greenhouse gas emissions, improve residents' health, create good-paying local jobs, and help advance racial equity.
- A partnership of the American Council for an Energy-Efficient Economy (ACEEE), Elevate, Emerald Cities Collaborative, and HR&A Advisors, R2E2 will offer guidance on energy upgrade financing models, economic inclusion, navigating the complexities of the affordable housing sector, and engaging with community-based organizations to ensure policy and program plans reflect community needs. People's Climate Innovation Center is advising R2E2 on centering equity in the project and its outcomes and on facilitating community-driven planning processes.

# Session Objectives

---

- Participants will understand the Community-Driven Climate Resilience Planning tool principles and frameworks.
- Participants will understand the Spectrum of Engagement to Ownership and be able to identify the best ways to engage community members.
- Participants can identify ways to build stronger connections between agencies, the local government, community organizations and community members.



WE BELIEVE...

**Communities have the right to define their priorities and needs.**

NOSOTROS CREEMOS...

**Las comunidades tienen derecho a definir sus prioridades y necesidades.**



**What's the “Best of the Best” when community leads?**

**¿Qué es lo mejor de lo mejor cuando la comunidad lidera?**





**“Power is participation in decision-making... Real participation changes the status quo.”**

**“Poder es participación en la toma de decisiones... La participación real cambia el status quo.”**

— Sherry R. Arnstein



**What is Climate Resilience?**

**¿Qué es la resiliencia climática?**

**RESILIENCE =**

**Adaptation +**

**Mitigation +**

**Social Cohesion +**

**Equity**



# **Why Community-Driven Climate Resilience Planning?**

**¿Por qué planificar la resiliencia climática impulsada por la comunidad?**



# Community-Driven Climate Resilience Planning

## Planificación de resiliencia climática impulsada por la comunidad

- Builds leadership outside of local government agencies

*Construye liderazgo fuera de las agencias gubernamentales locales*

- Increases collaboration and capacity

*Aumenta la colaboración y la capacidad*

- Advances a multi-sectoral approach for more holistic and effective solutions

*Promueve un enfoque multisectorial para soluciones más holísticas y efectivas*

# Community-Driven Climate Resilience Planning Framework

## Marco de planificación de resiliencia climática impulsado por la comunidad

- Co-launched with NACRP members and grassroots partners via the NACRP in the summer of 2017.
- It was created through convening community driven planners from base-building and base-building support organizations.
- It includes principles, practices, and key capacities for community-driven planning.



- Co-lanzado con miembros de NACRP y socios de base a través de NACRP en el verano de 2017.
- Fue creado a través de la convocatoria de planificadores impulsados por la comunidad de organizaciones de apoyo a la construcción de base.
- Incluye principios, prácticas y capacidades clave para la planificación impulsada por la comunidad.

**How are these essential elements connected?**

**¿Cómo están conectados estos elementos esenciales?**

**La solución comunitaria es importante ya que están en el entorno del problema y la solución será más eficaz**



**Tener influencia y autoridad para la toma de decisiones (otorgada o no) en puestos tradicionales y no, para producir cambios**

**ENGINE OF COMMUNITY-DRIVEN PLANNING**

**MOTOR DE PLANIFICACIÓN IMPULSADA POR LA COMUNIDAD**



## Five Principles/Cinco Principios

1. Whole Systems Thinking	1. Pensamiento de sistemas completos
2. Desired Outcomes Reflected in Every Step	2. Resultados deseados reflejados en cada paso
3. Planning Process as a Learning Process	3. El proceso de planificación como proceso de aprendizaje
4. Planning into Action	4. Planificación en acción
5. Balancing Power Dynamics among Stakeholders	5. Equilibrio de las dinámicas de poder entre las partes interesadas

- Whole Systems Thinking
  - Climate change impacts many aspects of society, including our energy, water, and food systems. This requires a holistic understanding of the complex challenges and also complex and holistic solutions.
- Desired Outcomes Reflected in Every Step
  - Outcomes and principles such as equity and community-derived planning should be embedded in each step of the planning and implementation process.
- Planning Process as a Learning Process
  - Foster multi-dimensional learning across governance levels - meaning learning goes across and between stakeholders and sectors to increase understanding of causes and consequences of climate disruption and processes and pathways to address it.
- Planning into Action
  - Making sure everything is in place for implementation such as

resources, capacity, technical assistance, leadership readiness, etc.

- Balancing Power Dynamics among Stakeholders is twofold:
  - Procedural: increasing awareness of systems of oppression and exclusionary practices/cultures that perpetuate power imbalances that contribute to climate vulnerability, and then decision-makers sharing that power in the planning and implementation process and community groups increasing capacity to step into that power.
  - Substantive: Increasing access and control over essential resources at the community level to reduce vulnerability and power imbalances.

**What's challenging about community-led planning processes?**

**¿Qué es un desafío acerca de los procesos de planificación dirigidos por la comunidad?**

**What principles do you most connect with and why? How do they show up in your community and in your work?**

**¿Con qué principios te conectas más y por qué? ¿Cómo aparecen en tu comunidad y en tu trabajo?**



## INFORM

Provide the community with relevant information



## CONSULT

Gather input from the community



## INVOLVE

Ensure community needs and assets are integrated into process and inform planning



## COLLABORATE

Ensure community capacity to play a leadership role in implementation of decisions



## DEFER TO

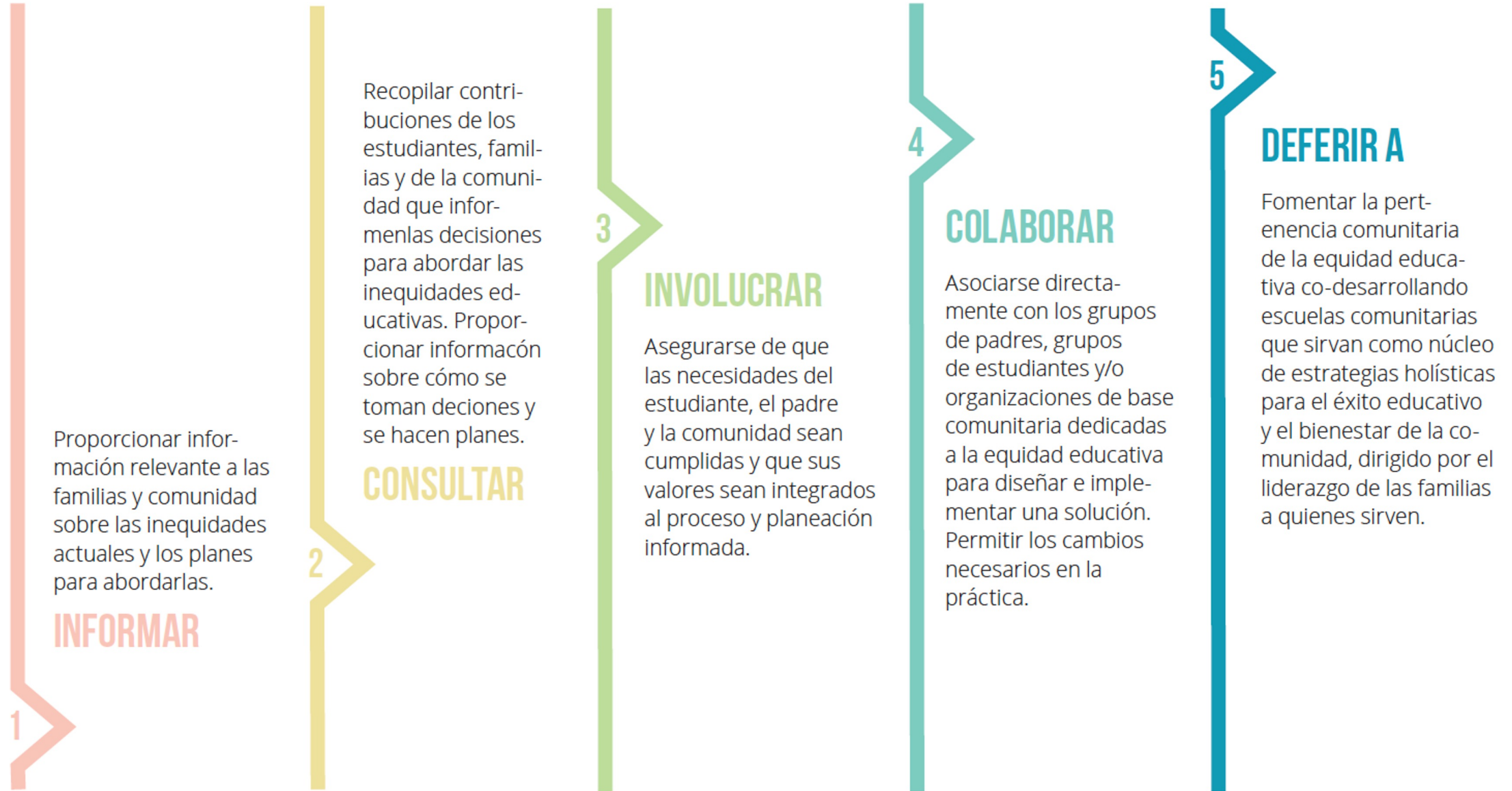
Foster democratic participation and equity by bridging the divide between community and governance, through community-driven decision-making



**Facilitating  
Power**



# ESPECTRO DE PARTICIPACIÓN FAMILIAR PARA LA EQUIDAD EDUCATIVA



STANCE  
TOWARDS  
COMMUNITY

**IGNORE**

0

IMPACT

**Marginalization**

COMMUNITY  
ENGAGEMENT  
GOALS

Deny access to decision-making processes

MESSAGE TO  
COMMUNITY

*Your voice, needs & interests do not matter*

ACTIVITIES

Closed door meeting  
Misinformation  
Systematic Disenfranchisement  
Voter suppression

RESOURCE  
ALLOCATION  
RATIOS

**100%**  
Systems Admin

**INFORM**

1

**Preparation or Placation**

Provide the community with relevant information

*We will keep you informed*

Fact sheets  
Open Houses  
Presentations  
Billboards  
Videos

**70-90%**  
Systems Admin

**10-30%**  
Promotions and Publicity

**CONSULT**

2

**Limited Voice or Tokenization**

Gather input from the community

*We care what you think*

Public Comment  
Focus Groups  
Community Forums  
Surveys

**60-80%**  
Systems Admin

**20-40%**  
Consultation Activities

**INVOLVE**

3

**Voice**

Ensure community needs and assets are integrated into process & inform planning

*You are making us think, (and therefore act) differently about the issue*

Community organizing & advocacy  
Interactive workshops  
Polling  
Community forums  
Open Planning Forums with Citizen Polling

**50-60%**  
Systems Admin

**40-50%**  
Community Involvement

**COLLABORATE**

4

**Delegated Power**

Ensure community capacity to play a leadership role in decision-making and the implementation of decisions.

*Your leadership and expertise are critical to how we address the issue*

MOU's with Community-based organizations  
Citizen advisory committees  
Collaborative Data Analysis  
Co-Design and Co-Implementation of Solutions  
Collaborative Decision-Making

**20-50%**  
Systems Admin

**50-70%**  
Community Partners

**DEFER TO**

5

**Community Ownership**

Foster democratic participation and equity through community-driven decision-making; Bridge divide between community & governance

*It's time to unlock collective power and capacity for transformative solutions*

Community-driven planning and governance  
Consensus building  
Participatory action research  
Participatory budgeting  
Cooperative models

**80-100%**  
Community partners and community-driven processes ideally generate new value and resources that can be invested in solutions

ACTITUD HACIA LA COMUNIDAD

## 0 IGNORAR

## 1 INFORMAR

## 2 CONSULTAR

## 3 INVOLUCRAR

## 4 COLABORAR

## 5 DEFERIR A

RESULTADO

**Marginalización**

**Pacificar**

**Acción Simbólica**

**Voz**

**Poder delegado**

**Pertenencia en la comunidad**

METAS DE PARTICIPACIÓN COMUNITARIA

Negar el acceso al proceso de toma de decisiones

Provide students, families & community with relevant information

Gather input from students, families, and community

Ensure student, family and community needs and assets are integrated into process & inform planning

Ensure student, family, and community capacity to play a leadership role in implementation of decisions that affect them

Foster lasting educational equity through community-driven schools that are culturally rooted and responsive to wholes people, whole communities

MENSAJE A LA COMUNIDAD

*"Su voz, necesidades e intereses no importan"*

*"Lo mantendremos informado"*

*"Nos importa lo que piensa sobre algunas cosas"*

*"Las maneras en las que ustedes nos hacen pensar y actuar sirven mejor a los estudiantes y familias"*

*"Su liderazgo y experiencia son cruciales para poder lograr la educación equitativa"*

*"Es momento de liberar la capacidad colectiva comunitaria para ponerla al servicio de una equidad educativa duradera y para la salud de la comunidad. Su liderazgo es clave para la equidad educativa"*

ACTIVIDADES

- Reuniones a puerta cerrada
- Desinformación
- Desapoderamiento sistemático

- Hojas informativas
- Eventos con puertas abiertas al público
- Presentaciones
- Videos

- Comentario público
- Grupos de enfoque
- Encuestas

- Organización comunitaria y abogacía
- Talleres interactivos y foros que cumplen con las necesidades para que las familias participen

- MDE con organizaciones de base comunitaria
- Organización comunitaria, hacerlos más culturalmente relevantes (acogedor, accesible)
- Organización comunitaria
- Comités asesores de estudiantes y familias

- Reuniones de planeación culturalmente relevantes organizadas por la comunidad
- Crear consenso
- Acciones de investigación participativas lideradas por estudiantes/familias
- Presupuesto participativo

IMPACTO EN LAS FAMILIAS

- Rechazo
- Enojo
- Insignificancia

- Impotencia
- Frustración
- Desesperación

- Explotación
- Discriminación
- Humillación

- Voz
- Inclusión
- Poder

- Liderazgo
- Compromiso
- Poder

- Responsabilidad mutuamente
- Salud
- Poder

CONTACT

# Thank you Gracias

[Corrine@climateinnovation.net](mailto:Corrine@climateinnovation.net)

Corrine Van Hook-Turner  
Director/Directora

[Jaime@climateinnovation.net](mailto:Jaime@climateinnovation.net)

Jaime Love  
Director of Programs/Directora de Programas



PEOPLE'S  
CLIMATE  
INNOVATION  
CENTER

People's Climate Innovation Center  
23564 Calabasas Road, Suite 201  
Calabasas, CA 91302



# Resources

- [Community-Driven Climate Resilience Planning: A Framework](#)
- [Spectrum of Community Engagement to Ownership](#)
- [Map, Reflect, Assess, Set Goals worksheet](#)

# Partners



**ELEVATE**



## Strategic Advisor



# Thank you to our funders



JPMORGAN  
CHASE & Co.

