



Show Me the Savings!

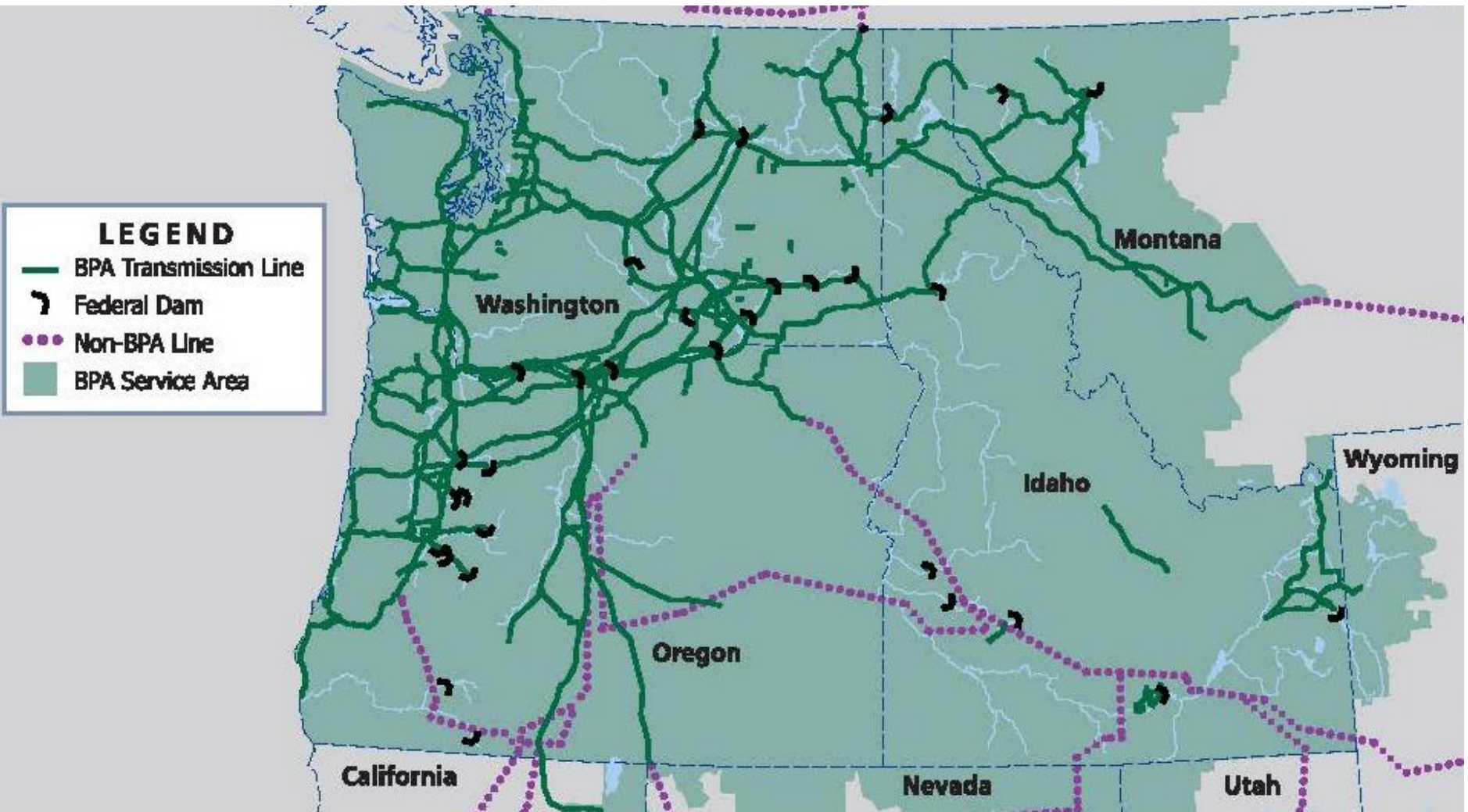
Efficiently measuring a reliable resource for the skeptics and the accountants

Lauren M. Gage
Danielle Gidding

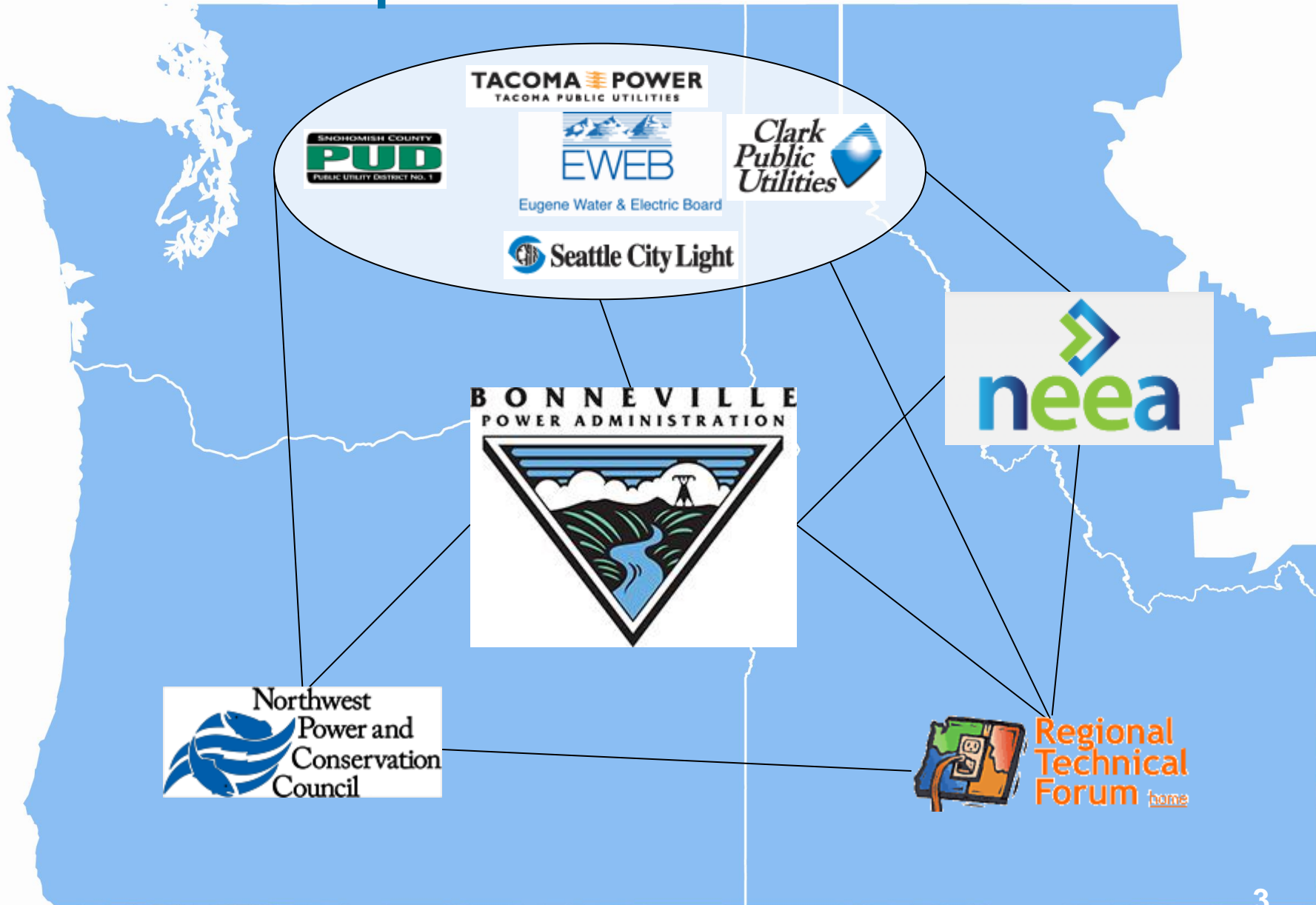
Presented at the 2013 ACEEE National Conference
on Energy Efficiency as a Resource



What is BPA?



NW EE Landscape



Not all roses.....

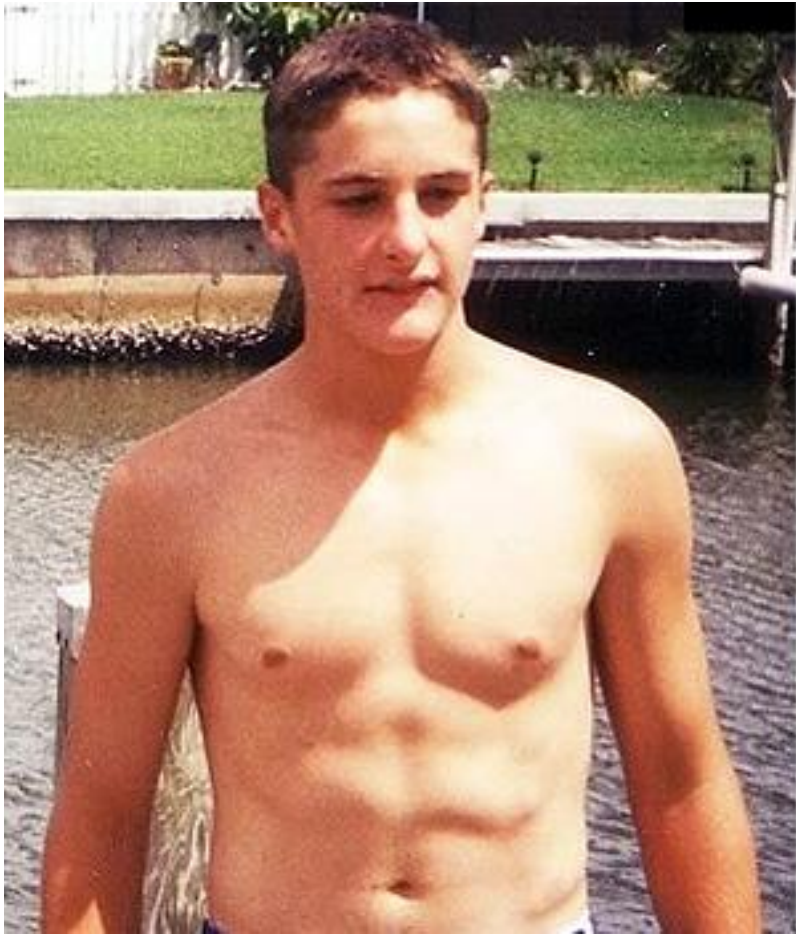


SKEPTICS



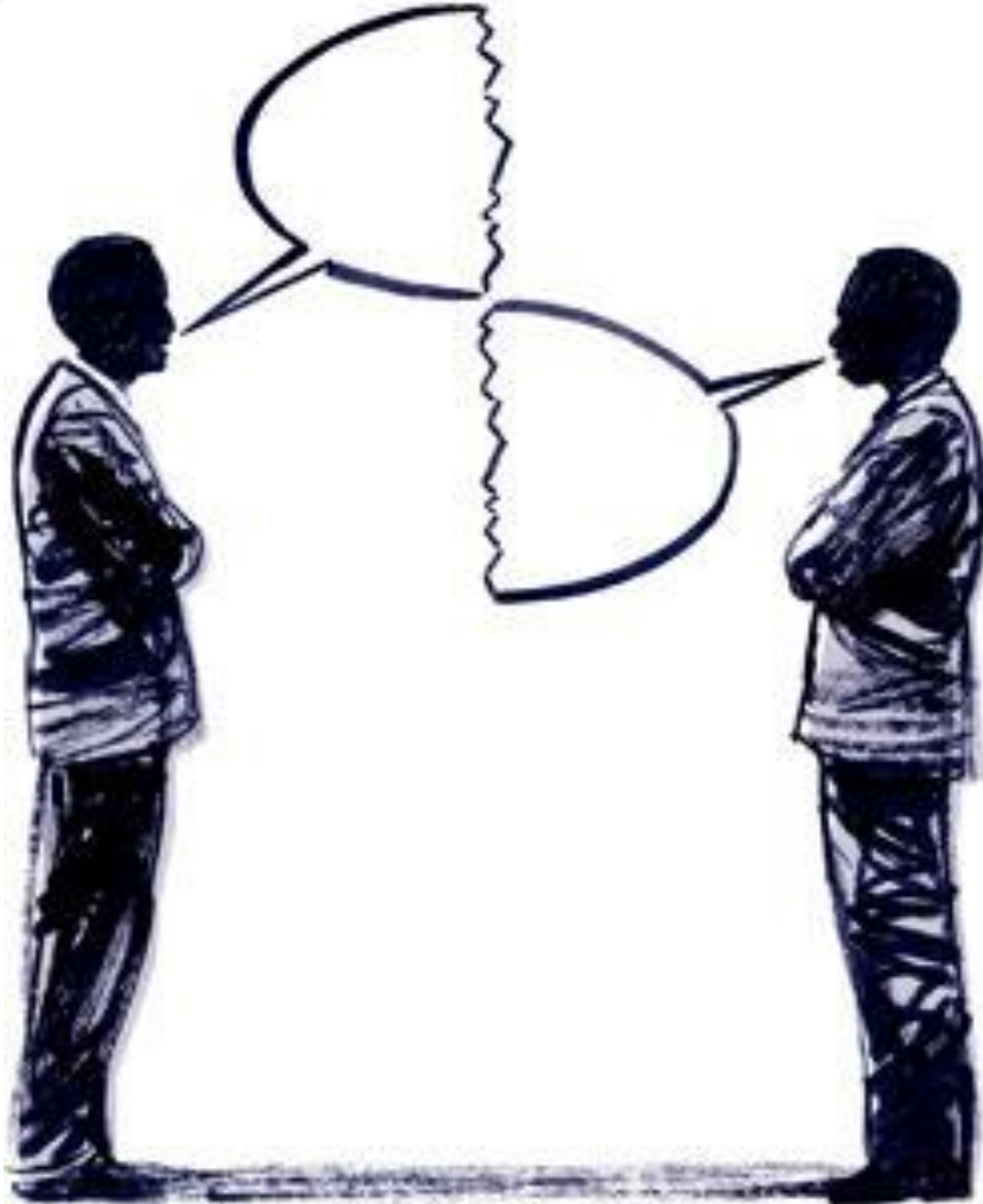
Can't touch it





Not defined enough

Huh?

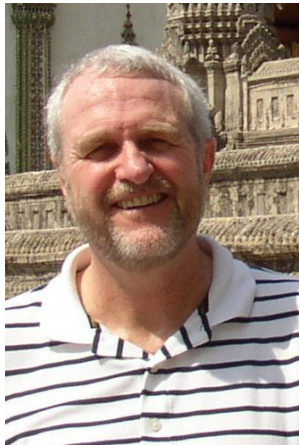


On the other hand....



WHAT SHOULD I BE TELLING THE SKEPTICS?

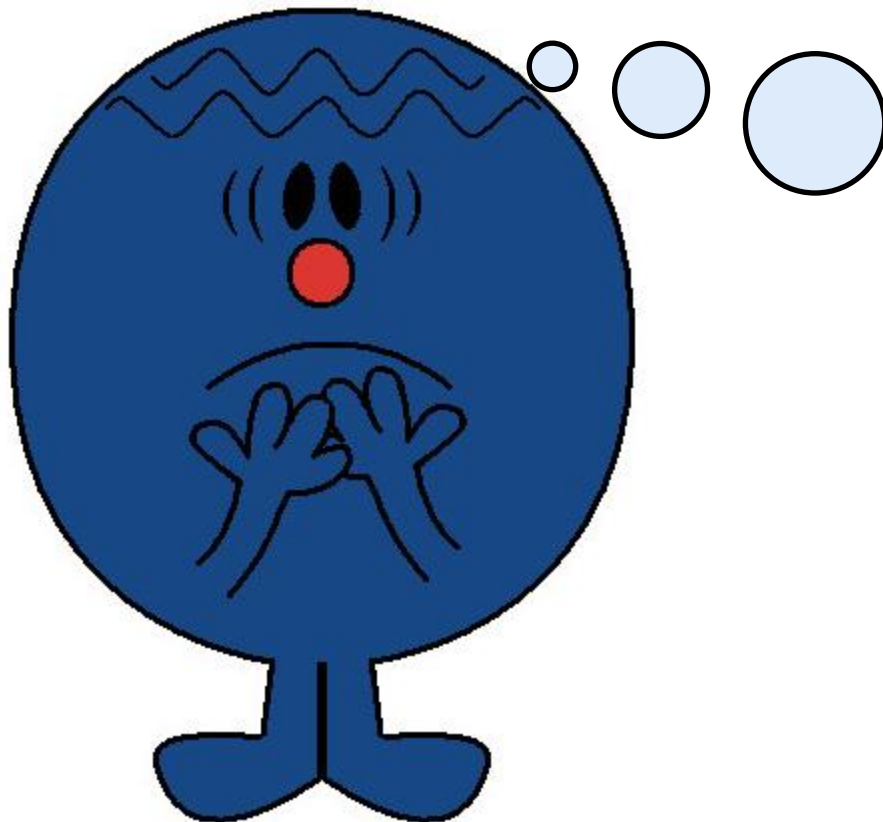
Strong industry..... Standards



**Regional
Technical
Forum**

**GUIDELINES FOR THE ESTIMATION OF ENERGY
SAVINGS**

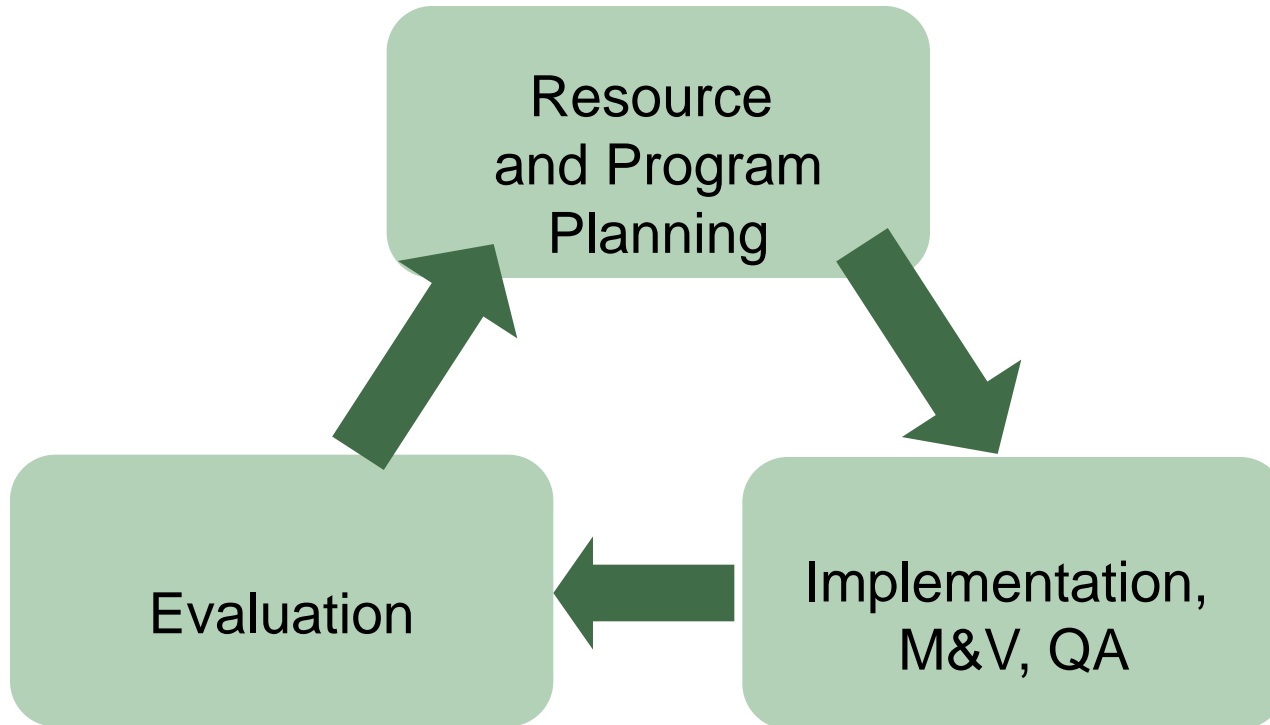
Details.....



Baselines
Grid savings
Interaction
Expiration
Persistence

.....

Reliability throughout the process



Impact evaluation:

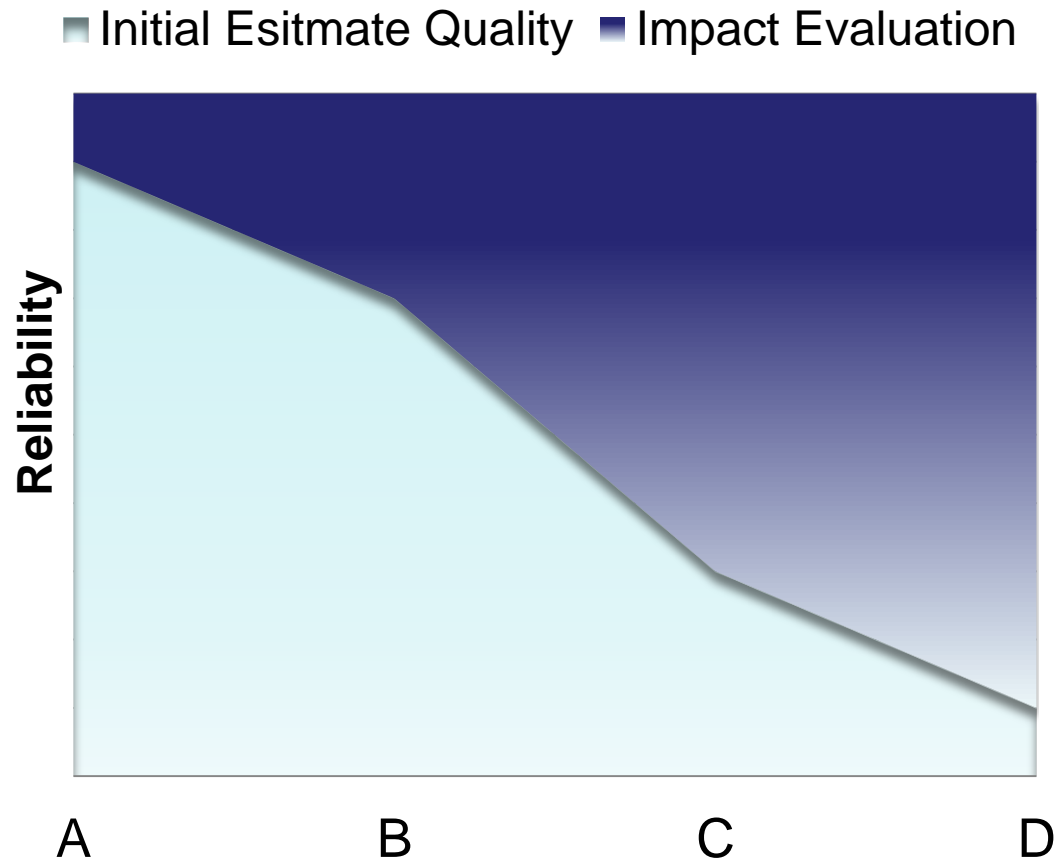
reliable, cost-effective savings, improvements



Too
much?



Evaluation doing only what it must



Consider the Portfolio



Can't touch it

**EVALUATION METHODS
BASELINES**



Not defined enough

Huh?

GET OUT OF OUR BUBBLE



Questions?

- lsmgage@bpa.gov
- 503-319-7195

