

San Francisco Peak Energy Program (SF PEP)



SF Environment
Our home. Our city. Our planet.

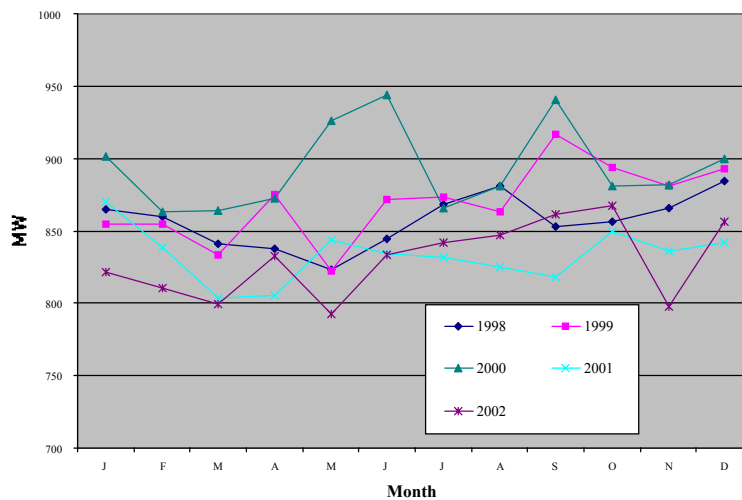


**Pacific Gas and
Electric Company™**

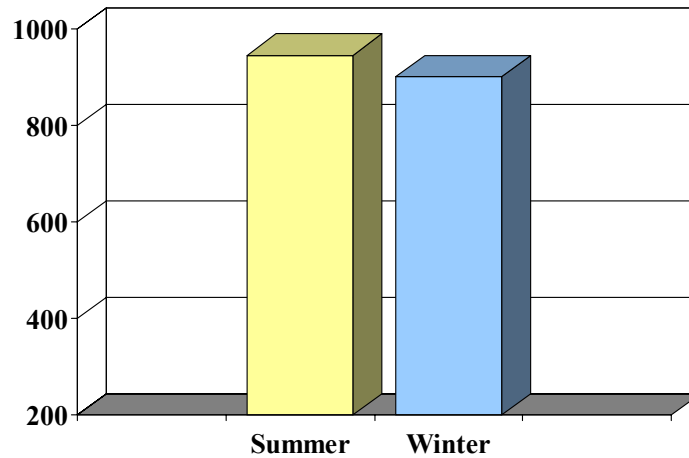
A Partnership between
Pacific Gas and Electric Company (PG&E)
and the City and County of San Francisco
Department of Environment (SFE)

SF Load Curve

SF Monthly Peak Loads



San Francisco's Twin Peaks



SF Peak Energy Program

GOAL: 16 MW by 2005

BUDGET: \$16,313,000

PROJECTED SAVINGS (MW)

	Net	Gross
WINTER	14.22	16.14
SUMMER	19.77	22.83

Power to Which People?

(Commercial Sector)

Commercial Analysis

- Billing Data for 2002
- Loadshape of Peak to Annual Energy Use
- Applied these data to Building Type & Zip
- PG&E program savings by Building Type & Zip over 2000-02 period

Power to Which People?

(Commercial Sector)

Top Five Commercial Energy Users

	% Peak kW	% kWh
• Offices	61	55
• Retail	11	10
• Hotel/Motel	7	10
• Restaurant	6	8
• Food Stores	4	6

Commercial kW Savings Potential (Net Base Achievable over Time)

	MW	MWh
Total	24.4	143,094
• Offices	17.1	98,464
• Retail	2.8	12,628
• Hotel/Motel	2.3	15,507
• Restaurant	1.0	5,218
• Food Stores	1.2	11,277

Power to Which People? (Residential Sector)

Building Type	Square Ft.
Single Family	160,628,535
2-4 Unit	73,069,269
Multifamily (5+units)	111,368,363

End Use Targets

- Summer Peak
 - Commercial HVAC
 - Commercial Lighting
 - Restaurant/Food Service
- Winter Peak
 - Commercial and Residential Lighting
 - Residential Clothes Washers
 - Restaurant/Food Service

SF PEP Implementation Plan 8 Elements

- Multifamily Rebates
- Residential Case Studies
- Standard Performance Contract (SPC)
- Cash Rebates for Business Customers
- Codes and Standards
- Targeted Energy Audits
- Emerging Technologies
- Commercial Turnkey

SF PEP vs Statewide Incentives Standard Performance Contract

- Adds “kW Kicker” to kWh incentives
 - *\$100/kW for Summer Peak measures
 - *\$150/kW for Winter Peak measures
- Imposes timeframe for install
- Incentives capped at 50% of project costs up to \$400,000

SF PEP vs Statewide Incentives Cash Rebates for Businesses

Modification of Express Efficiency Program

- Increased rebate amount on select items
- Addition of items for SF only
- Dishwasher Booster Heater (fuel switch)
- Open to large customers (500kW+)

SF PEP vs Statewide Incentives Multifamily

- Addition of items for SF only
- Special torchiere turn-in events
- Common areas of low income properties
(piggyback on LIEE program)

Commercial Turnkey Program

- Small and Medium Businesses
- Aggressive marketing and outreach through SFE-City contacts
- Audits, application assistance, contractor referrals, follow-up
- Incentives through SPC/Cash Rebates (PG&E)
- Inspection support for SPC
- Separate evaluation

Other SF PEP Elements

- Codes & Standards
 - Early adoption of new Title 24 standards
- Targeted Energy Audits
 - Assistance for large commercial customers
- Emerging Technologies
 - Sceptic (high color temp) lighting, lighting controls, res infiltration demonstrations
- Residential Case Studies
 - Building types, heating systems, construction details

Demand Reduction

Pilot will be co-marketed with

- Enhanced Automation Program (CEC)
- Critical Peak Pricing (Tariff)
- Demand Response Partnership (CPA)